

Tropical Ecology Assessment and Monitoring (TEAM)



Badru Mugerwa, ITFC & MUST

TEAM sites



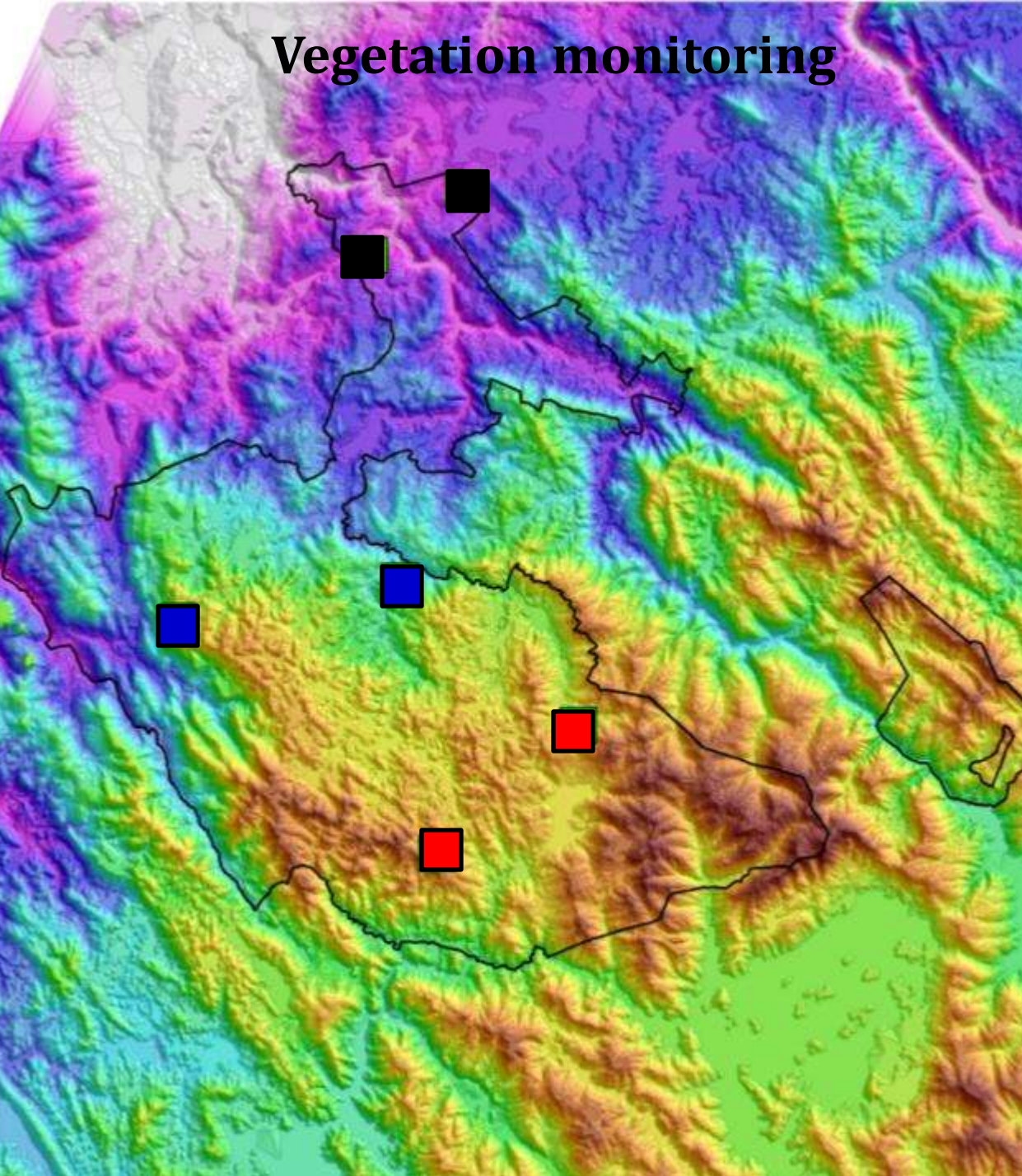
All data is publically free at <http://www.teamnetwork.org>

Climate monitoring

- Rain fall
- Temperature
- Humidity
- Solar radiation



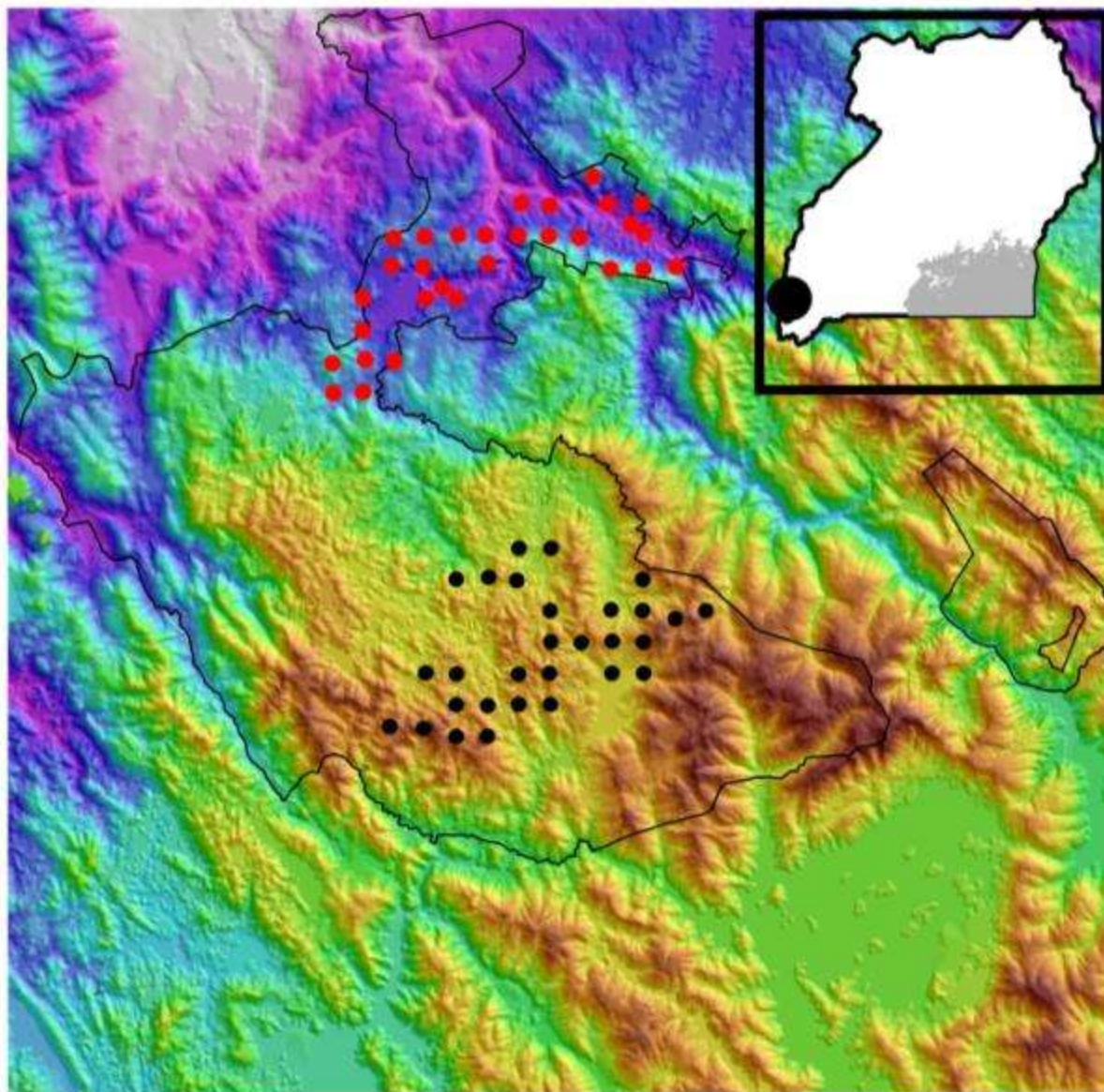
Vegetation monitoring



- 6 -1ha PSPs
- 3 elevation zones
- 3070 stems
- Measured
- Tagged
- Identified
- Mapped



Terrestrial vertebrate monitoring



- 2x2 camera surveys
- 2 elevation zones
- 29072 total images
- 19337 useful images
- 23 mammal species
- 5 bird species



Domestic dog *Canis lupus*



Black Goshawk *Accipiter melanoleucus*.



Golden cat- Lighter "Gold" Color morph
Profelis aurata (519 images, 14 CTs)







L'Hoest's Monkey *Cercopithecus lhoesti*



Mountain gorilla *Gorilla beringei*

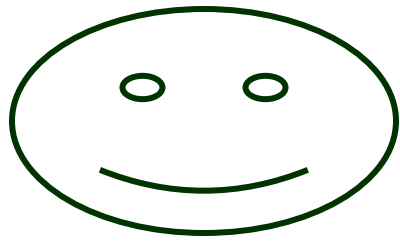


African elephant *Loxodonta africana*



How important to ITFC/UWA /Bwindi

- Baseline biodiversity surveys
- Part of a global network of field sites monitoring biodiversity following standard methods.
- Increased ITFC/UWA/BINP exposure to global community.
- Conducting research, monitoring and training aimed at ensuring conservation of Uganda's natural heritage for future generations.



Thank you

